





## New Product

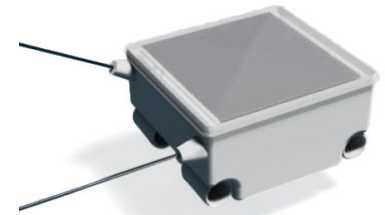
# PinPoint Cell

**Technology:**  **Satellite**  **CSM**

**Product:**  **Tag**



Northern lapwing (*Vanellus vanellus*)



## GPS-GSM tag, from only 6g!

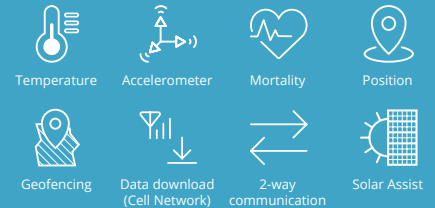
PinPoint Cell tags combine the success of our PinPoint GPS with the most popular data download method: via the mobile phone network. You can see the data online at Lotek's Webservice, or even using an app on your phone, so you can keep up to date with where your birds are flying. Not only that, but it is easy to change or update the GPS and sensor collection schedule of your deployed tags remotely.

Our lightest tags are possible because they use the energy-efficient 2G networks. Easy to schedule, easy to start and easy to check and change once deployed. Contact one of our telemetry experts to help you choose the optimal tag for your study needs.

## Options

- 2-way communication of schedules
- Activity data
- Alerts or different GPS schedule when in a Virtual Fence

### Features:



### Lightweight:

Our 2G version is incredibly light for cell download.

### Solar Assisted:

Despite its small size, it can last a long time with the help of solar energy

### Abundant Metadata:

Plenty of environmental and behavioural data are provided to enhance the locations recorded

## Product Applications

PinPoint GPS Cell for birds & bats. Solar tags that transmit GPS data via the cellular network. Large amounts of data for a long duration. No need to ever disturb your species again. Migratory, regional and local movements can all be monitored for species that are within cellular coverage on occasion.

### New Product

Model	PinPoint Cell Solar 2G-1-30	PinPoint Cell Solar 2G-2-30	PinPoint Cell Solar 2G-2-75	PinPoint Cell Solar 2G-3-75	PinPoint Cell Solar 2G-3-210
Network	2G	2G	2G	2G	2G
Weight (g) <sup>1)</sup>	5.8	8.4	9.3	16.5	19
Size (L x W x H) (mm)	23 x 20 x 13	48 x 21 x 12	48 x 21 x 12	71 x 21 x 16	71 x 21 x 17
Solar panel size	1	2	2	3	3
Cell size	30	30	75	75	210
Antenna length	GPS antenna 50mm, GSM antenna 95mm			Internal	Internal
Harness tubes (internal Ø x L) (mm)	Four 2.5 x 5	Two 2.5 x 5 harness tubes at the front, One 2.5 x 10 harness tube at the back			

1. Weight ±5% variation

Features and specifications subject to change without notice.

Technical specifications:  
 Operating temperature: -5°C to +50°C  
 Waterproofing: Splash tolerant  
 Rechargeable: Solar powered

Data Download: Web portal  
 Antenna options on tag weight:  
 More robust antenna options are available and add weight.  
 Please ask our Telemetry Specialists for more information.

### Warranty

PinPoint Cell tags are warrantied to be free of defects in materials and workmanship under Normal Use for a duration of 80% of Estimated Life to a Maximum of 6 months, whichever is shorter, of their first deployment. For Warranty terms and conditions, please review our [Warranty Statement](#).