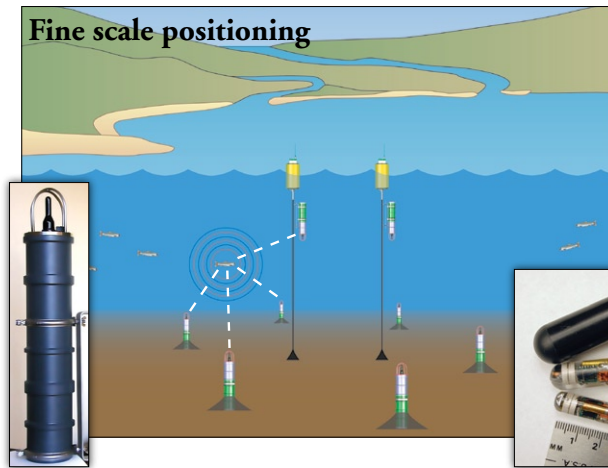
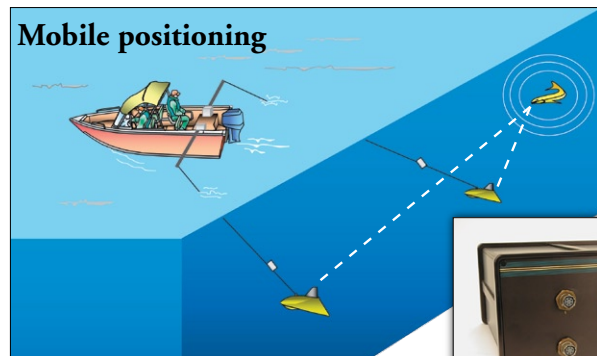


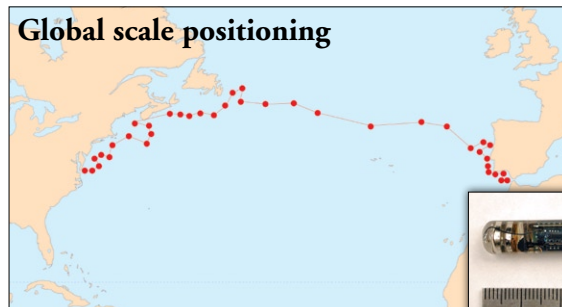
Lotek multi-mode tools bridge telemetry architectures



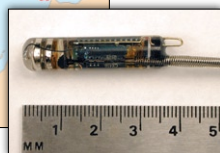
ALPS for wireless positioning, WHS 3050 (L) & Dual Mode MapR Tags (R)



SYNAPS for mobile positioning & MAP RT



Geolocation LAT 2510



Nature is rarely as simple as any one tool that we may design to study it. The more complex the application, the greater the need for innovative telemetry solutions that bridge technology platforms.

Since 1984, Lotek Wireless has been designing leading-edge telemetry tools and architectures using every available technology: radio, acoustic, archival and satellite.

When no single tool or technology suffices, we combine them to create the more complete telemetry architectures that our clients need to answer their complex questions. For example:

- ▶ Our **SYNAPS** mobile positioning system combines **MAP** and **GPS** technologies to allow mobile tracking in 2D or 3D.
- ▶ **Dual Mode MapR Tags** provide compatibility between fine scale and coastal receiver arrays by transmitting both **MAP** and **VR** signals.
- ▶ **LAT geolocation tags** give researchers the ability to track on a global scale.
- ▶ **CART** tags combine acoustic and radio transmissions in a single tag that can follow anadromous species through both fresh and salt water environments.

Contact us for innovative solutions for your complex applications.

Delivering innovative solutions for a sustainable future.

Telephone: 905-836-6680
Email: biotelemetry@lotek.com
Website: www.lotek.com

