

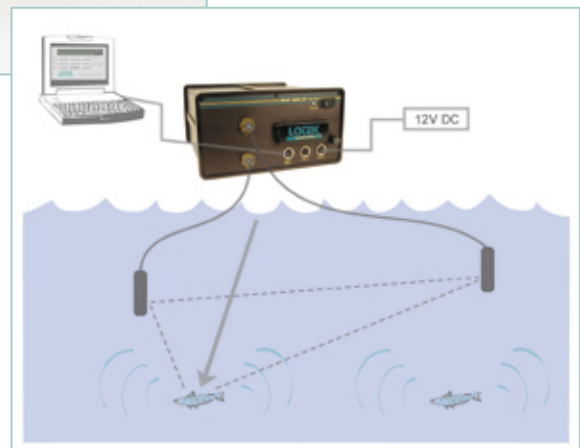
MAP 600 RT-A Receiver

Mobile acoustic tracking in real time



- ▶ Real-time direction finding
- ▶ Simultaneous decoding of multiple transmitters
- ▶ Superior range compared to conventional pulsed acoustics
- ▶ Reliable tracking in high noise environments
- ▶ Sensor data support
- ▶ Mobile 2D/3D positioning*

The MAP 600 RT-A (Real Time) receiver is designed specifically for simultaneous mobile tracking of multiple transmitters including sensors (temperature, pressure/depth, motion). It is configured for use with two hydrophone ports for real time direction finding or 2D/3D positioning from a moving platform.



Key Features

- Lotek MAP coding allows transmitters to emit signals with high repetition rates (to one per second), making them easier to track manually
- MAP (CDMA) coding allows for multiple simultaneous detection of hundreds of co-located transmitters.
- Stereo hydrophones add the ability to detect the presence and the relative direction of fish in an instant.
- Mobile 2D/3D positioning* of tagged animals with use of SYNAPS software
- Time of arrival direction finding supports use of basic omnidirectional hydrophones to detect signals over a wide angle, which eliminates the need for frequent boat maneuvering.
- All detections of fish ID, temperature, depth and motion status (requires sensor tag) appear on the screen immediately upon detection.

LOTEK
WIRELESS
FISH & WILDLIFE MONITORING

Innovative solutions for a sustainable future.

- Receivers
- Dataloggers
- Radio transmitters

- Acoustic transmitters
- Archival tags
- GPS systems

- Hydrophones
- Wireless hydrophones
- Physiological transmitters

- Depth transmitters
- Accessories
- Consulting

MAP 600 RT-A

MAP 600 RT-A Specifications

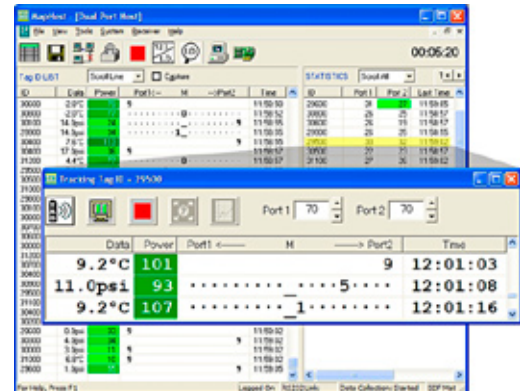
Specifications subject to change without notice

Feature	Description
No. of Hydrophone Ports	2
Tag ID Capacity	Tens of thousands on a single frequency band
Operating Frequency Bands	76 kHz & 200 kHz
Communication Interface	RS232
User Interface	PC based Host software provides control of receiver, status monitoring and real-time viewing of detection events. Real-Time Virtual Control Panel (VCP) with Angle of Arrival display
Hydrophone Types Supported	76 kHz or 200 kHz omnidirectional
Sensor Support	Temperature, pressure/depth, and/or motion sensing transmitters with ID
Memory (data storage)	Field exchangeable - 2 Gbyte
Power Requirements	9W @ 12VDC as 2-port RT Mobile Receiver
Operating Temperature	-30° C to +50° C
Enclosure Dimensions	26.9 cm x 25.4cm x 14cm
Enclosure Weight	3.3 kg
Audio Feedback	Integrated speaker plus headphone jack

* Mobile 2D/3D positioning system requires SYNAPS software

MapHost Software

The MAP 600 RT-A tracking system works in conjunction with PC host control software to display and store in real time both tag detections and sensor data, e.g. temperature, depth, and/or motion, while providing instantaneous indication of the fish's direction in relation to the hydrophone array. Audible voice or tone prompts announce detections to assist active tracking sessions.



RT Host Virtual Control Panel

SYNAPS Software

SYNAPS (synthetic aperture positioning system) extends hydrophone array positioning to mobile surface vessel based tracking studies by combining detection records collected from one or two moving hydrophones with GPS-referenced positions of the tow boat. 3D positioning is supported with the use of depth sensing transmitters.