

# BioMAP for GPS

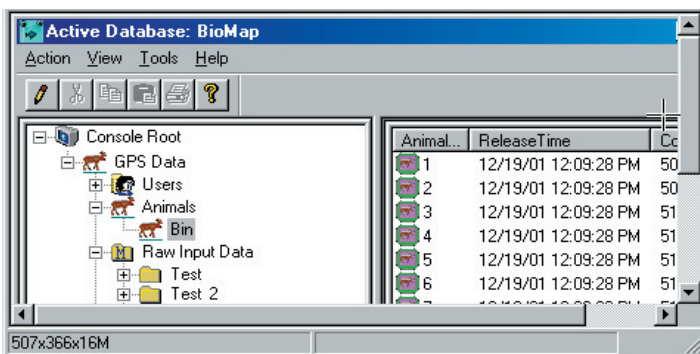
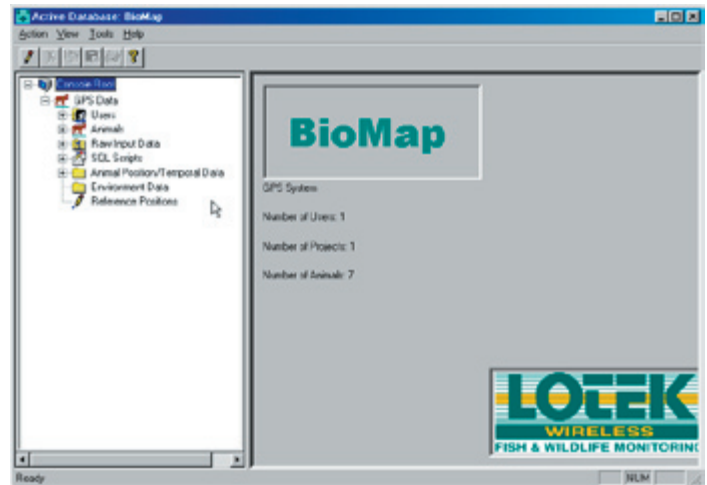
## Database for Wildlife Management Software

**BioMAP** is a windows based solution for processing and managing data from radio telemetry studies of animal behaviour and/or ecology.

### Functions

**BioMAP** offers an exclusive data management tools, enabling the user to :

- query the database at different levels of sophistication
- organize information concerning animals and environment
- arrange logged data collected by the collar
- interface to utilities such as GIS and 3rd party computational packages
- efficiently operate database over a network (researchers in separate facilities can share a common database).
- maintain security through multi-level password controlled access



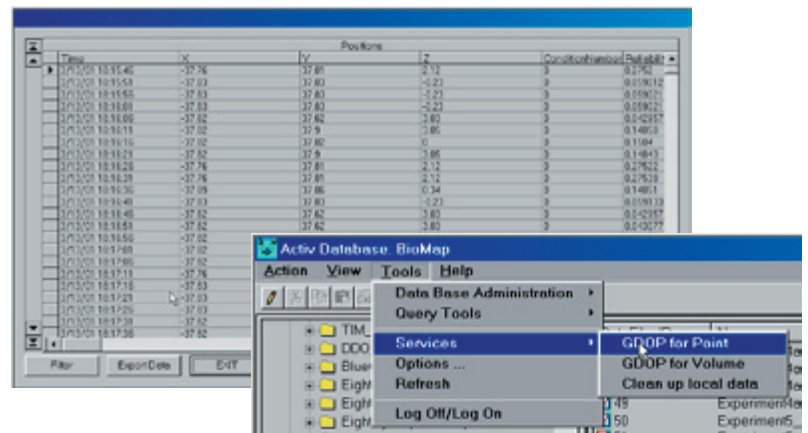
### Features

- presentation of animal position data in different coordination systems (UTM, Geographical Coordinate System, Lat/Long/Height)
- import function for generated data files
- export function for document generation
- data exchange with third party spacial analysis/ visualization software tools
- data can be classified, filtered, hierarchically ordered
- graphically present and/or animate data

### Completely transparent to the user

**BioMAP** data processing engine converts the binary files collected from GPS collars into a customized database by using the Microsoft's SQL database management tool.

Users familiar with SQL may write their own scripts using a 'command line' interface.



- Receivers
- Dataloggers
- Radio transmitters

- Acoustic transmitters
- Archival tags
- GPS systems

- Hydrophones
- Wireless hydrophones
- 2D/3D Position systems

- Sensor transmitters
- Accessories
- Consulting

# BioMAP for GPS

