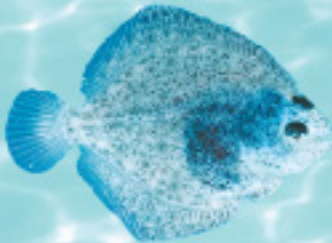


Freshwater & Marine
Archival

ARCGEO Series

For collection and storage of precision time stamped depth, temperature and light-based geolocation data.



ARCGEO-9TS



ARCGEO-13TS



- Timing of migration/movement studies.
- Behaviour identification and characterization studies; feeding, spawning, migration.
- Endangered species critical habitat utilization studies, vertical, horizontal temperature preferences.
- Fisheries management stock structure studies.
- Validation of stock assessment model studies.
- Ocean observing studies.

- Receivers
- Dataloggers
- Radio transmitters

- Acoustic transmitters
- Archival tags
- GPS systems

LOTEK
WIRELESS
FISH & WILDLIFE MONITORING

Innovative solutions for a sustainable future.

- Hydrophones
- Wireless hydrophones
- Physiological transmitters

- Depth transmitters
- Accessories
- Consulting

Lotek Archival Tags: Geolocation

Benefits

- Wet start function automatically enables logging when the tag is immersed.
- Sequential logs support different sensor combinations and sampling rates.
- Light geolocation post-processing using Lotek's advanced template-fit algorithm built into the LAT Viewer Studio software.
- Memory contents retained for 25 years ensuring data retention even if the tag is recovered years after the battery is exhausted.

Model	Dimensions (tubular form factor)	Weight in air (g)	Weight in water (g)	Sampling Interval (seconds)	Estimated Life (months)
ARC GEO-9TS	9mm x 38mm	5.1	2.3	30	24 *
ARC GEO-13TS	13mm x 57mm	12	7.25	30	48 **

The estimated life is based on a single deployment at the stated sampling interval.

If you plan to deploy for multiple short deployments and/or sample at shorter intervals, please contact your telemetry specialist

* Warranty 12 months

** Warranty 24 months

Technical Specifications

Memory: 32 Mbytes
 Number of sequential logs: 8
 Sample rate setting: 1 sec. increments

Sensors

Light, Internal & External Temperature, Depth

Light sensor stalk: Yes

Wet/dry sensor: Yes

Temperature:

Operating range: -20 to 45° C

Calibrated range: -5 to 35° C

Temperature resolution: 0.05° C or better

Temperature accuracy: Better than 0.3° C

Depth:

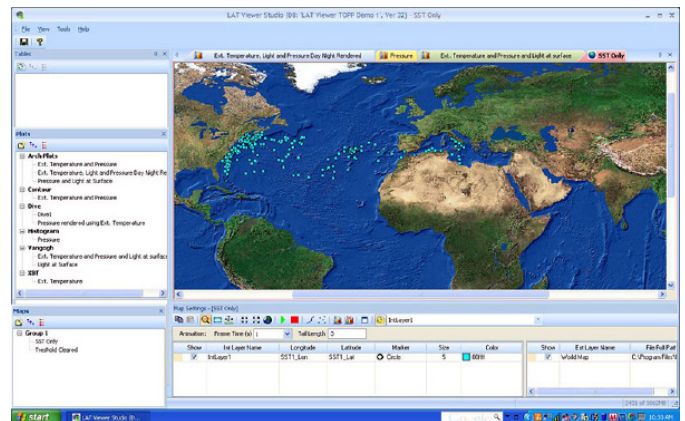
Depth Sensor Options: 50m, 100m, 200m, 500m, 1000m, 2000m

Depth resolution: 0.05% of full scale

Depth accuracy: ±1.0% of full scale



ARC TAG READER & LAT VIEWER STUDIO SOFTWARE



Software tools

ARC Tag Talk host
 LAT Viewer Studio post-processing and visualization



Innovative solutions for a sustainable future.

TECHNICAL SPECIFICATIONS SUBJECT TO CHANGE WITHOUT NOTICE

D0717-001

Tel: 905-836-6680
 Fax: 905-836-6455

Web: www.lotek.com
 Email: biotelemetry@lotek.com